



SUSTAINABLE MELANGE YARNS



SUSTAINABLE MELANGE YARNS



25 MW SOLAR POWER

Plants installed in Rajasthan



800,000 TONS

of CO₂ emissions reduced annually



3,600 TONS

of Fibre Green® produced every month



183 CR.

PET bottles recycled annually



30 TONS

of Fabric recycled every month through Garnetting



100 METRIC TONS

plastic

2 TONS

paper

20 TONS

metal recycled per day



4,92,750 KILOLITRES

water saved annually through water effluent treatment plant



1.5 LAKH

trees planted every year as a part of RSWM initiative



1000 LITRES

of fossil fuel saved by travel or generation of power



GREEN BUILDING

Offices and Mills for energy saving

**OUR
STANCE
TOWARDS
SUSTAINABILITY**

SUSTAINABLE MELANGE YARNS



RIGHT USE Be mindful. Know what to use, how to use, and how much to use.

RETHINK Your strategies for sustainability.

REPAIR Your infrastructure for sustainment.

REUSE Find ways to give discarded items a new purpose.

REDUCE The generation of water effluents and other harmful components.

REFUSE Refuse what you do not require. Take steps to avoid generating waste before disposing of it.

RECYCLE In an attempt to preserve the natural resources for the future.

RECOVER The Eco-system from dangerous toxins.

REGIFT Our mother Earth by spreading awareness about sustainability and by planting more trees.

NEW LIFE To you, to the Earth, and to the Recycled materials.



SUSTAINABLE MELANGE YARNS



EPITOME OF PERFECTION

RSWM Limited, the flagship company of LNJ Bhilwara group is one of the most supreme & top grossing manufacturers-exporters of synthetic and blended spun yarns in India. Under the thorough guidance of RSWM Ltd.'s Chairman and Managing Director Mr. Riju Jhunjhunwala, the company spans over 78 countries all over the world and has established a repertoire for supplying best in class high quality yarns to the most prolific, responsible and eminent brands as they sit at the pinnacle of the textile industry - thanks to RSWM's praiseworthy commitment and competent state of the art facility.

In 1961, L.N. Jhunjhunwala laid the foundation by setting up LNJ Bhilwara Group, a consortium of distinctive businesses with a strong hold in textiles, graphite electrodes, power generation, power engineering and information technology services with its annual turnover surpassing INR 5,600 crore. The Group with over 60 years of experience has changed the complexion of textile industry and that single textile plant in 1961 expanding into several plants to fulfill the modern textile requirements.

In its 10 manufacturing units situated across Rajasthan with a production capacity of 4,97,000 spindles and 172 looms, RSWM offers innumerable yarn blends such as cotton, synthetic, core-spun, zero twist, hollow core, greige, dyed, fancy, mélange, eco-friendly and sustainable yarns. These knitting and weaving yarns are used for textile applications like suiting, shirting, knits, sewing thread, home furnishing, carpets, industrial & medical applications.

RSWM has seen heights of success for the last 60 years for manufacturing high-end cotton, mélange, synthetic, novelty, denim, and sustainable yarns all around the world.

RSWM has been felicitated with Rajiv Gandhi national quality award thrice and it is recognized as a Golden Trading House by the Indian government.

The LNJ Bhilwara group is Proud To Be Indian, Privileged To Be Global and the legacy continues.



SUSTAINABLE MELANGE YARNS



SUSTAINABLE COMFORT



SUSTAINABLE MELANGE YARNS



INDEX FOR EXPERIENCE

PRODUCT NAME

WOOL YARN	>
SILK YARN	>
HEMP YARN	>
LINEN YARN	>
RECYCLED POLYESTER YARN	>
RECYCLED COTTON YARN	>
ECOVERO™ YARN	>
LIVAECO™ YARN	>
LIVA REVIVA YARN	>
TENCEL™ REFIBRA™ YARN	>
TENCEL™ LYOCELL YARN	>
SEACELL™ YARN	>
CUPRO (BEMBERG™) YARN	>
UMORFIL® BEAUTY® YARN	>
LOTUS YARN	>
BAMBOO YARN	>
R-ELAN™ ECOGOLD (CICLO®) YARN	>
COFFEE CHARCOAL (SCAFE®) YARN	>
SORONA SUSTANS® YARN	>
COOLMAX® ECOMADE™ YARN	>



SUSTAINABLE MELANGE YARNS

WOOL YARN

SALIENT FEATURES

1. Comes from Merino sheep – a breed of sheep.
2. Known for its adaptability, softness, and skin friendliness.
3. Thinner than human hair. Human hair is 30 microns, whereas Merino ranges from 14.5–23.5 microns.
4. Clothes produced are flexible, resistant to water, stain resistant, odours resistant, and wrinkle resistant.
5. Five times more elastic than cotton. Hypo-allergenic and also protects our skin from UV rays (SPF20+).
6. Biodegradable, organic, and eco-friendly.

DYEING PROCESS

Wool is dyed using various dyes such as Acid metal complex dyes, Reactive dyes and Natural. Best dye for levelness is levelling acid & best dye for fastness is reactive wool dye.

WASH CARE

Lukewarm water, approximately 30°C, using a neutral, mild detergent is preferred. Thorough rinsing with lukewarm and finally with cold water is recommended.

IRON CARE

Requires light ironing.

APPLICATIONS

Wool clothes, wool blankets and other wool items.



SUSTAINABLE MELANGE YARNS



COUNT: 1/30S • BLEND: COTTON/WOOL 80/20 • LOT NO. 1852300373 • SHADE NO. 89958012



COUNT: 1/26S • BLEND: COTTON/WOOL 80/20 • LOT NO. 2152300640 • SHADE NO. 89958038



[← BACK TO INDEX](#)

SILK YARN

SALIENT FEATURES

1. Strongest fibre in the world grown through a natural process.
2. Fibroins, a natural protein is used for production.
3. Bombyx Mori larvae that reside in mulberry trees are responsible for majority of silk production globally.
4. Soft, durable, lightweight and shines elegantly.
5. Keeps warm in winters and cool in summers.
6. Highly absorbent and can absorb 30% of its weight without the damp feeling.
7. Sustainable fibre, eco-friendly and does not harm the environment.
8. Silk yarn is Thermoregulatory, hypo-allergenic, biodegradable, hydrophilic, and dyes well.

DYEING PROCESS

Silk is dyed using various dyes such as Acid dyes, basic, metal-complex, chrome, reactive dyes etc. Acid dyes are more suitable for silk.

APPLICATIONS

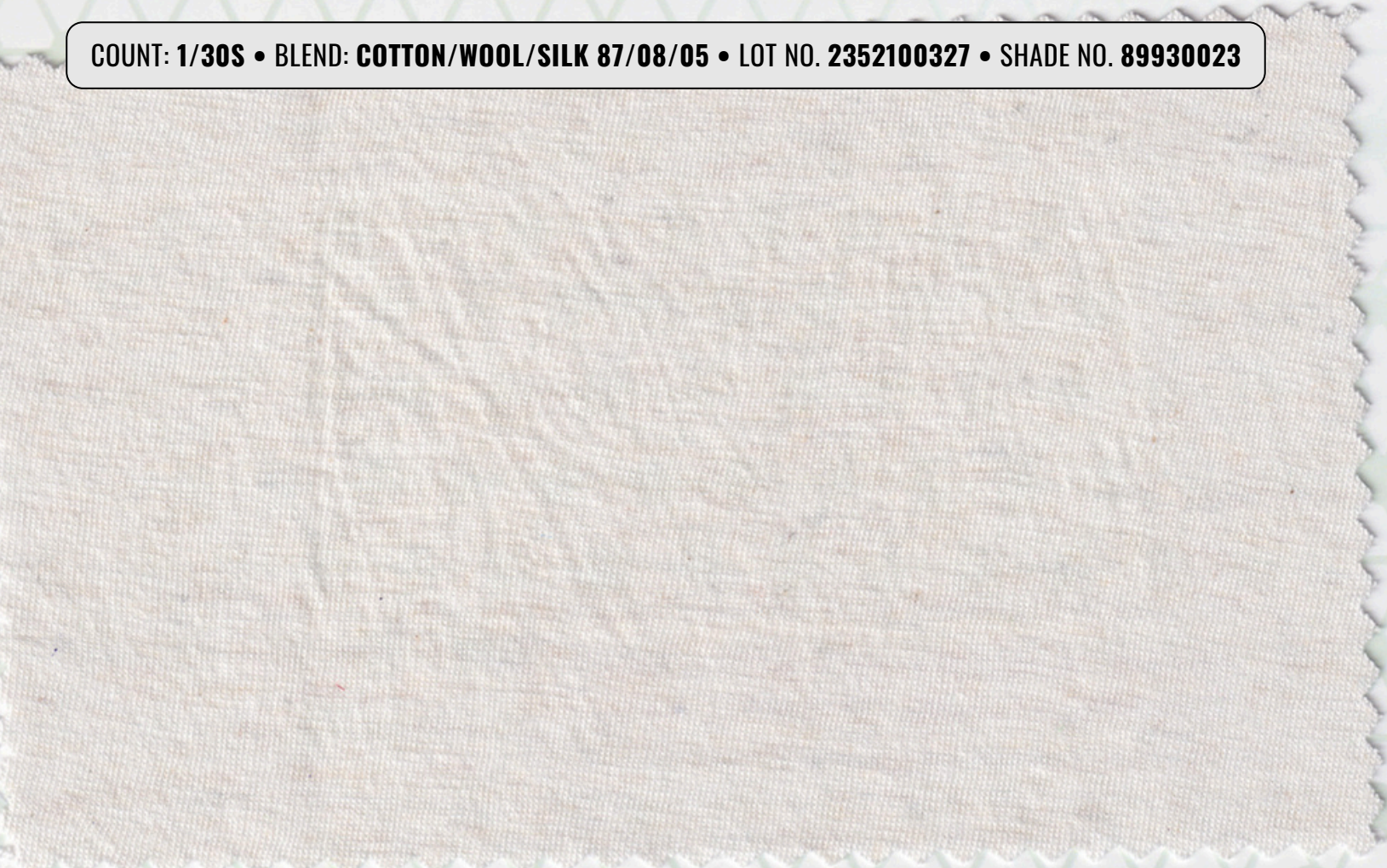
Shirts, blouses, scarves, undergarments, pillows, and curtains.



SUSTAINABLE MELANGE YARNS



COUNT: 1/30S • BLEND: COTTON/WOOL/SILK 87/08/05 • LOT NO. 2352100327 • SHADE NO. 89930023



COUNT: 1/30S • BLEND: COTTON/SILK 80/20 • LOT NO. 1950100131 • SHADE NO. 89958000



[← BACK TO INDEX](#)

SUSTAINABLE MELANGE YARNS

HEMP YARN

SALIENT FEATURES

1. Outer portion of stalks of Cannabis sativa plants are used.
2. Strongest natural fibre and durable than any natural fibre. Also lasts longer.
3. Clothes are able to retain their shape as this yarn is not that stretchable.
4. Colour retention is better than cotton.
5. Naturally porous, breathable, and dries quickly.
6. Fabric made is thermoregulatory, UV resistant, anti-microbial, washable, and a great insulator.
7. Quality remains the same even if exposed to the scorching Sun.

BLEND RATIO

To obtain the properties in the final fabric, 5%-20% of this can be blended with other fibres.

DYEING PROCESS

Dyeing is similar to Cotton fibre dyeing. Different class or reactive dyes like Hot brand, Cold brand etc. is used to dye the fibre or its cellulose blends.

APPLICATIONS

Dresses, suits, separates, skirts, jackets, pants, blouses, shirts, children's wear, curtains, draperies, upholstery, bedspreads, table liners, sheets, and dish towels.



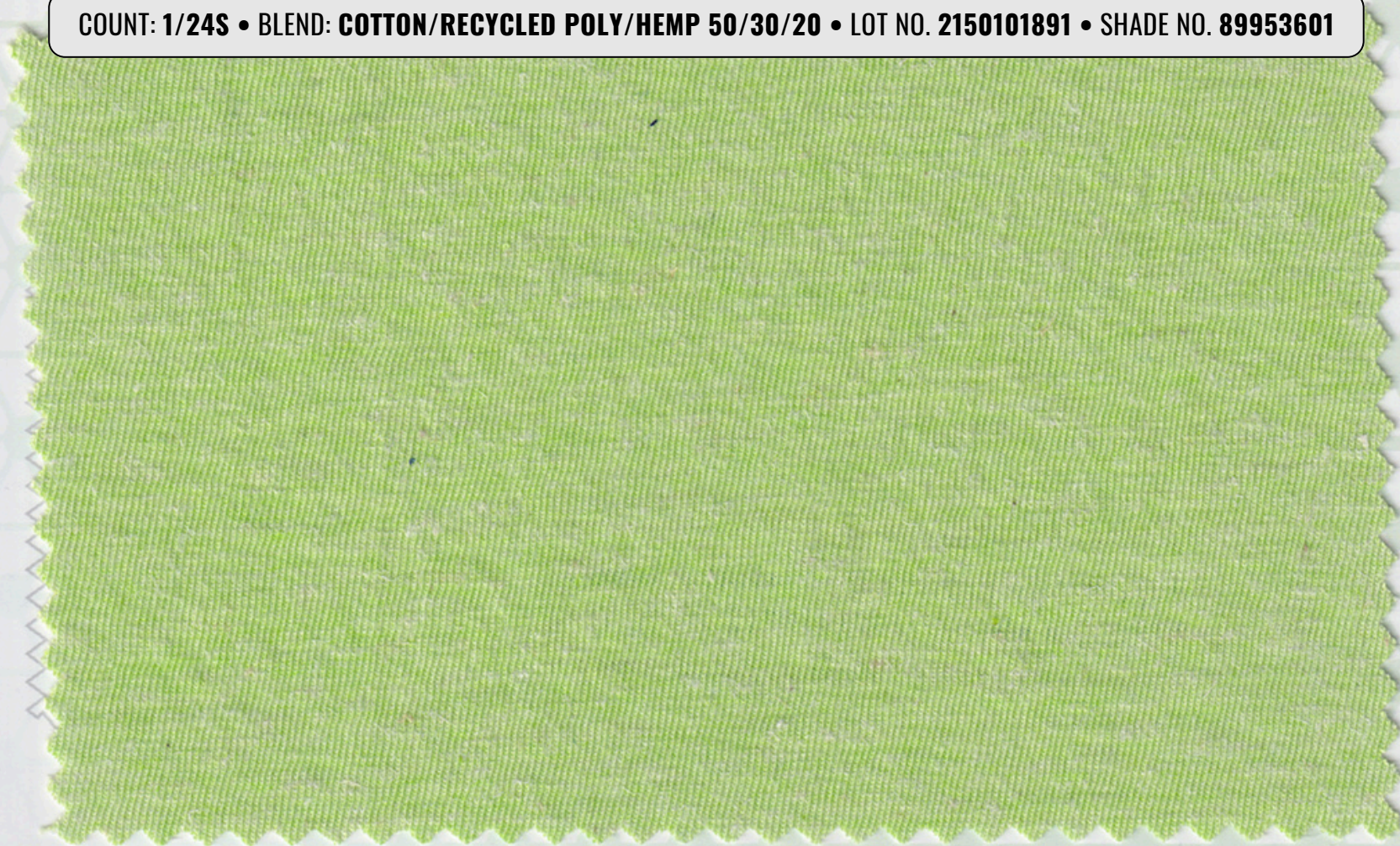
SUSTAINABLE MELANGE YARNS



COUNT: 1/24S • BLEND: **COTTON/MODAL/HEMP 50/30/20** • LOT NO. 2150101889 • SHADE NO. DGRNMH



COUNT: 1/24S • BLEND: **COTTON/RECYCLED POLY/HEMP 50/30/20** • LOT NO. 2150101891 • SHADE NO. 89953601



[← BACK TO INDEX](#)

SUSTAINABLE MELANGE YARNS



LINEN YARN

SALIENT FEATURES

1. Made from Flax plant branches.
2. One of the oldest textile fibres used by humans. Production method has no chemical footprint.
3. Gets softer and flexible with each wash.
4. Absorbs 20% of its own weight, and keeps the skin dry.
5. Stronger than cotton. Dries quickly and absorbs moisture & sweat efficiently.
6. Anti-microbial, hypo-allergenic and thermoregulatory.
7. OEKO-TEX 100 Class 1 certified fibre, free from harmful chemicals.

BLEND RATIO

To obtain the properties in the final fabric, 5%-20% of this can be blended with other fibres.

DYEING PROCESS

Dyeing is similar to Cotton fibre dyeing. Different class or reactive dyes like Hot brand, Cold brand etc. is used to dye the fibre or its cellulose blends.

APPLICATIONS

Bedsheets, pillowcases, blankets, dishtowels, bath towels, upholstery, skirts, shirts, suits, dresses, luggage, thread, aprons, bags, napkins, table clothes, and diapers.



SUSTAINABLE MELANGE YARNS



COUNT: 1/20S • BLEND: **POLY/COTTON/LINEN 40/52/08** • LOT NO. 1652301450 • SHADE NO. 89943605



COUNT: 1/30S • BLEND: **POLY/COTTON/LINEN 40/52/08** • LOT NO. 1752102108 • SHADE NO. 89932611



[← BACK TO INDEX](#)

SUSTAINABLE MELANGE YARNS



RECYCLED POLYESTER YARN

SALIENT FEATURES

1. Recycled polyester (rPET) is made from plastic bottles.
2. Eco-friendly and lasts longer.
3. Significantly reduces the carbon footprint.
4. Compared to virgin polyester, it reduces 70% of greenhouse gases.
5. rPET can be recycled indefinitely.
6. Contains signs of the environment sustainability, and sustainability of the clothes.
7. An efficient way of removing industrial landfills.

BLEND RATIO

To obtain the properties in the final fabric, 100% of this can be blended with other fibres.

DYEING PROCESS

Can be dyed in any shade except White & Bright shade using Disperse dyes.

WASH CARE

It should be washed with a very small amount of softener for a capacious touch, and smoother feel.

IRON CARE

Steam well while ironing.

APPLICATIONS

Outerwear, fashion & casual apparel, interior furnishings for home & office, men's and women's wear, knits, and woven fabrics.



[← BACK TO INDEX](#)

SUSTAINABLE MELANGE YARNS



COUNT: 1/30S • BLEND: RECYCLED POLY/BCI COTTON 40/60 • LOT NO. 2150100026 • SHADE NO. GGRNPC



COUNT: 1/30S • BLEND: RECYCLED POLY/BCI COTTON 40/60 • LOT NO. 2150100027 • SHADE NO. FBLUPC



[← BACK TO INDEX](#)

RECYCLED COTTON YARN

SALIENT FEATURES

1. A conversion process of cotton fabric into cotton fibres, to be re-used in textile products.
2. Also known as Reclaimed Cotton, Regenerated Cotton, or Shoddy.
3. Requires less water than growing virgin cotton. Reduces water and energy consumption.
4. Recycled raw materials, used, re-conditioned, and re-manufactured components are used for production.

BLEND RATIO

To obtain the properties in the final fabric, maximum 20% of this can be blended with other fibres.

DYEING PROCESS

Can be dyed in any shade using Reactive, Direct and Natural dyes.

WASH CARE

Advised to wash it normally using mild detergent and cold water.

IRON CARE

Ironing on full heat is recommended.

APPLICATIONS

Outerwear, fashion, casual apparel, Men-women's wear, knits, and woven fabrics.



SUSTAINABLE MELANGE YARNS



COUNT: 1/30S • BLEND: ORG COTTON/RECYCLED COTTON 70/30 • LOT NO. 2050101789 • SHADE NO. 88200000



COUNT: 1/30S • BLEND: ORG COTTON/RECYCLED COTTON 70/30 • LOT NO. 2050101805 • SHADE NO. 88600000



[← BACK TO INDEX](#)

SUSTAINABLE MELANGE YARNS



ECOVERO™ YARN

SALIENT FEATURES

1. Certified & controlled sourced Sustainable wood & pulp is used.
2. Reduces emissions and water impact compared to Viscose.
3. Certified by EU Eco-label for strict production methods.
4. Cuts CO₂ emissions and fossil fuel consumption by 50%.
5. Biodegradable, soft, and comfortable for skin.
6. 50% less water impact.

BLEND RATIO
To obtain the properties in the final fabric, minimum 40% of this can be blended with other fibres.

DYEING PROCESS
Can be dyed in any shade through Reactive dyes.

WASH CARE
It should be washed with minimal amount of chemical softener for more voluminous touch and clearer feel.

IRON CARE
Steam well during ironing.

APPLICATIONS
Women's wear, Interlinings, Shirts, Blouses, Workwear etc.



SUSTAINABLE MELANGE YARNS



COUNT: 1/30S • BLEND: COTTON/ECOVERO 80/20 • LOT NO. 1850102702 • SHADE NO. 89951600



COUNT: 1/30S • BLEND: ECOVERO/COTTON/KAPOK 60/30/10 • LOT NO. 2150100863 • SHADE NO. 89964000



SUSTAINABLE MELANGE YARNS



LIVAECO™ YARN

SALIENT FEATURES

1. Made from regenerated cellulose fibre derived from wood pulp of wood sourced from FSC® certified forests, known as Sustainable Forest Management.
2. One garment production saves 900 litres of water and emits 300 grams of less greenhouse gases.
3. Goes through a number of strict R&D check-ups to ensure its eco-friendliness.
4. Clothes produced are smooth, soft, vivid, and fully compostable.
5. Biodegradable, comfortable, quick absorbent, and has good moisture management.

BLEND RATIO

To obtain the properties in the final fabric, minimum 40% of this can be blended with other fibres.

DYEING PROCESS

Can be dyed in any shade through Reactive dyes.

WASH CARE

It is suggested to wash it with minimal amount of chemical softener for more voluminous touch, and clearer feel.

IRON CARE

Steam generously during ironing.

APPLICATIONS

Women's wear, Interlinings, shirts, blouses, work wear etc.



SUSTAINABLE MELANGE YARNS



COUNT: 1/30S • BLEND: COTTON/LIVAECO 60/40 • LOT NO. 2250102487 • SHADE NO. 89947000



COUNT: 1/30S • BLEND: COTTON/MODAL/LIVAECO 50/25/25 • LOT NO. 2250102628 • SHADE NO. 88600000



[← BACK TO INDEX](#)

SUSTAINABLE MELANGE YARNS



LIVA REVIVA YARN

SALIENT FEATURES

1. Made using Pre-consumer textile waste alongside a closed loop technology.
2. 80% of wood pulp and 20% of pre-consumer textile waste is used.
3. Eco-friendly, reduces greenhouse gases, and consumes less water.
4. The woods come from sustainable forests.
5. Recycled Claim Standard (RCS) certified for recycling raw materials.
6. Block chain system is used for discovering source traces.
7. Fully compostable & biodegradable, soft, comfortable, and good moisture management. Has low environmental impact.

BLEND RATIO

To obtain sufficient functional effect in the final fabric, minimum 40% of this can be blended with other fibres.

DYEING PROCESS

Can be dyed in any shade using fibre supplier guidelines.

WASHCARE

It is to be washed with minimal amount of chemical softener for more voluminous touch and clearer feel.

IRON CARE

Steam generously during ironing.

APPLICATIONS

Denim wear, knitwear, Jersey yarns, piece dyed woven, and unfinished fabrics.



[← BACK TO INDEX](#)

SUSTAINABLE MELANGE YARNS



COUNT: 1/30S • BLEND: REGENERATIVE COTTON/LIVA REVIVA 60/40 • LOT NO. 2250102363 • SHADE NO. 89300000



COUNT: 1/30S • BLEND: COTTON/POLYESTER/LIVA REVIVA 50/30/20 • LOT NO. 2350102008 • SHADE NO. 89986000



[← BACK TO INDEX](#)

SUSTAINABLE MELANGE YARNS



TENCEL™ REFIBRA™ YARN

SALIENT FEATURES

1. The up-cycling of a large proportion of fibre scraps from garment production is combined with virgin wood pulp to create Tencel Lyocell fibre.
2. Cotton fabric waste is processed and transformed into cotton pulp. 20% cotton pulp is mixed with 80% wood pulp.
3. The fibres made are bio-renewable.
4. The wood pulp used comes from sustainably managed forests.
5. Uses 95% less water during production.
6. Fully compostable & biodegradable, comfortable, soft, quick absorbent, and strong.
7. Certified from Global Recycling standard and Recycled Claim Standard.
8. Has low environmental impact.

BLEND RATIO
To obtain the properties in the final fabric, 40% of this can be blended with other fibres.

DYEING PROCESS
Can be dyed with direct or reactive dyes as using for cellulosic fibres & dyeing methods will be similar to those for other cellulosic fibres. To prevent loss of anti-fibrillation properties Lyocell Std. & Lyocell LF variant have detailed dyeing guideline, which can be made available on request.

WASH CARE
It is suggested to wash with minimal amount of chemical softener for more voluminous touch, and clearer feel.

IRON CARE
Steam generously during ironing.

APPLICATIONS
Denim wear, knitwear, jersey yarns, piece dyed woven and unfinished fabrics.



SUSTAINABLE MELANGE YARNS



COUNT: 1/30S • BLEND: TENCEL REFIBRA/REC COTT/SEACELL 60/20/20 • LOT NO. 2250102041 • SHADE NO. 89926000



COUNT: 1/30S • BLEND: TENCEL REFIBRA 100% • LOT NO. 2250102047 • SHADE NO. 89975000



SUSTAINABLE MELANGE YARNS

TENCEL™ LYOCELL YARN

SALIENT FEATURES

1. Natural cellulose in wood pulp is used. Sourced from harvested trees hence, a renewable resource.
2. A very strong fibre, saves energy, and natural resources.
3. Hygroscopic, permeable, strong, biodegradable, soft, and long lasting.
4. Breathable, lightweight, glossy, drapes well, has good moisture management, and is anti-bacterial.
5. Production method is called "Solvent Spinning Method".
6. Can be known as "Green fibre" since it decomposes into the soil.
7. Protects the skin and keeps it dry.

BLEND RATIO

To obtain the properties in the final fabric, minimum 40% of this can be blended with other fibres.

DYEING PROCESS

Can be dyed with direct or reactive dyes as using for cellulosic fibres & dyeing methods will be similar to those for other cellulosic fibres. To prevent loss of anti-fibrillation properties Lyocell Std., Lyocell LF & Lyocell A-100 variant have detailed dyeing guideline, which can be made available on request.

WASH CARE

It is suggested to wash it with minimal amount of chemical softener for more voluminous touch, and clearer feel.

IRON CARE

Steam generously during ironing.

APPLICATIONS

Knitwear & piece dyed woven; unfinished fabrics for garment processing, Denim, suiting, shirting, T-shirt, children wear, ladieswear etc.



SUSTAINABLE MELANGE YARNS



COUNT: 1/40S • BLEND: COTTON/TENCEL LYOCCELL 50/50 • LOT NO. 1662100982 • SHADE NO. 85970017



COUNT: 1/30S • BLEND: COTTON/TENCEL/CASHMERE 55/40/05 • LOT NO. 2350100446 • SHADE NO. FBBLUEPC



[← BACK TO INDEX](#)

SUSTAINABLE MELANGE YARNS



SEACELL™ LYOCELL YARN

SALIENT FEATURES

1. Seaweed and wood are the main components.
2. Seaweed comes from the aquatic ecosystems that make Seacell eco-friendly and biodegradable.
3. Have active ingredients of Seaweed.
4. Shields our skin from skin diseases, harmful UA/UV rays, and environmental toxins.
5. Comfortable, soft, and gives a serene feeling of wellness.
6. Rapidly absorbs the sweat from the body.

BLEND RATIO
To obtain the properties in the final fabric, 20%-25% of this can be blended with other fibres.

DYEING PROCESS
Can be dyed with direct or reactive dyes as using for cellulosic fibres & dyeing methods will be similar to those for other cellulosic fibres. To prevent loss of anti-fibrillation properties SeaCell Lyocell have detailed dyeing guideline, which can be made available on request.

WASH CARE
It should be washed with a little amount of softener for a capacious touch, and smoother feel.

IRON CARE
Steam well while ironing.

APPLICATIONS
Nightwear, baby wear, bedding & upholstery, underwear, medical wear etc.



SUSTAINABLE MELANGE YARNS



COUNT: 1/30S • BLEND: **COTTON/SEACELL/NYLON 60/20/20** • LOT NO. 2150101982 • SHADE NO. 85930000



COUNT: 1/30S • BLEND: **MODAL/SEACELL/COTTON 40/40/20** • LOT NO. 2250100315 • SHADE NO. 87950000

SUSTAINABLE MELANGE YARNS

CUPRO (BEMBERG™) YARN

SALIENT FEATURES

1. Also known as copper silk, ammonia silk or cuprammonium rayon for its properties similar to silk.
2. Produced from the short "linters" of cotton plants.
3. Consists cellulose treated with copper, ammonia and caustic soda; results in a semi-synthetic substance.
4. Retains moisture, fineness, and softness.
5. Penetrate the soil and come back to its original state. It can be recycled.
6. Thermoregulatory, hypo-allergenic, breathable, and biodegradable.

BLEND RATIO

To obtain the properties in the final fabric, 1%-100% of this can be blended with other fibres.

DYEING PROCESS

Can be dyed in any shade through Reactive dyeing process. Because of its more porous, more amorphous structure, Cupro exhibits faster dye takeup and greater saturation than cotton, ramie, and rayon.

WASH CARE

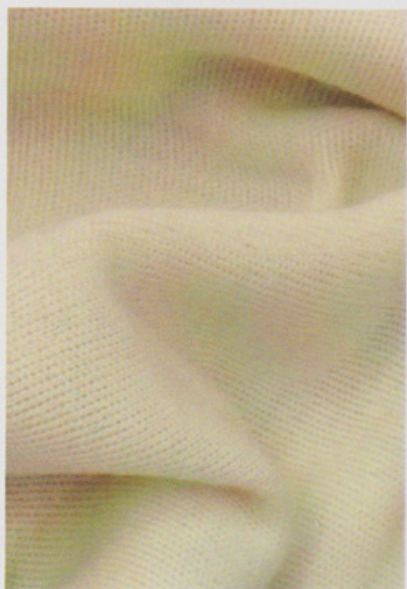
It should be washed with minimal amount of chemical softener for more voluminous touch and clearer feel.

IRON CARE

Steam generously during ironing.

APPLICATIONS

Innerwear, outerwear & active wear, bedding fabrics, quality linings and lingerie, fashion & casual apparel, interior furnishing for home & office.



SUSTAINABLE MELANGE YARNS



COUNT: 1/30S • BLEND: **MODAL/CUPRO 60/40** • LOT NO. 2250102479 • SHADE NO. 89956000



COUNT: 1/30S • BLEND: **ORG COTTON/CUPRO 60/40** • LOT NO. 2250102480 • SHADE NO. 89966000



[← BACK TO INDEX](#)

SUSTAINABLE MELANGE YARNS



UMORFIL[®] BEAUTY[®] YARN

SALIENT FEATURES

1. Ocean collagen peptide amino acid from recycled fish scales and viscose fibres are the main components.
2. It is a mix of two words: Umro (moisture) and fil (any yarn).
3. Clothes retain skin moisture very well, and prevent skin ageing.
4. Suitable for the skin of infants and elderly people. Protects sensitive skin from UV-A and UV-B rays.
5. Biodegradable, eco-friendly, anti-static, deodorizing, and decomposes into the soil easily.
6. A recycled animal protein fibre with easily decomposable rayon and collagen peptides.

BLEND RATIO

To obtain the properties in the final fabric, 100% of this can be blended with other fibres. Minimum 35% required for knitting & woven, and 50% for Denim.

DYEING PROCESS

The dyeing and finishing condition of UMORFIL[®] Beauty Fiber[®] is no significant difference compared with regular viscose.

WASH CARE

It is suggested to wash it with minimal amount of chemical softener for more voluminous touch, and clearer feel.

IRON CARE

Steam generously during ironing.

APPLICATIONS

Knitwear, suiting, shirting, denim, fashion wear, inner wear, and active wear.



SUSTAINABLE MELANGE YARNS



COUNT: 1/30S • BLEND: COTTON/BEAUTY FIBRE 60/40 • LOT NO. 2250102331 • SHADE NO. 86400000



COUNT: 1/30S • BLEND: COTTON/RENEWCEL VIS./BEAUTY 60/10/30 • LOT NO. 2250102343 • SHADE NO. 89200000



SUSTAINABLE MELANGE YARNS

LOTUS YARN

SALIENT FEATURES

1. Stems of Lotus plants are used.
2. 15-20% of Lotus pulp is mixed with wood pulp for production.
3. An eco-friendly fibre. Must be woven within 24 hours of extraction to retain its quality.
4. Does not involve any chemical substance for production. Has 16 amino acids; 6 of them are essential for human beings.
5. Lightweight, soft, silky, and breathable like Linen and Silk.
6. Keeps us calm, peaceful, meditative, and heals headaches, heart problems, asthma, and lung problems.

BLEND RATIO

To obtain the properties in the final fabric, minimum 50% of this can be blended with other fibres.

DYEING PROCESS

Can be dyed in any shade through Reactive dyeing process.

WASH CARE

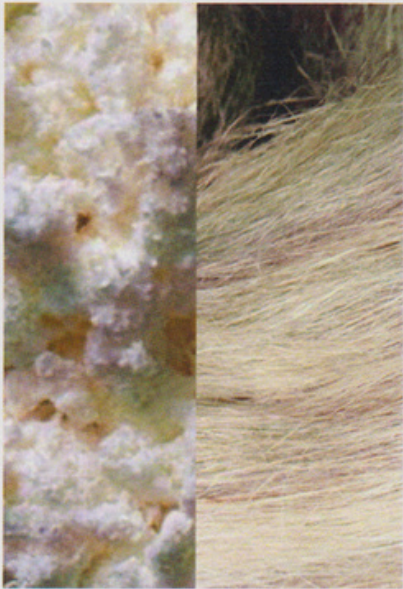
It is to be washed normally using mild detergent and cold water.

IRON CARE

Ironing on medium heat is recommended.

APPLICATIONS

Knitwear, underwear, bedding etc.



SUSTAINABLE MELANGE YARNS



COUNT: 1/30S • BLEND: MODAL/LOTUS 60/40 • LOT NO. 2150100065 • SHADE NO. GBLUCL



COUNT: 1/30S • BLEND: MODAL/LOTUS 60/40 • LOT NO. 2150100193 • SHADE NO. CPURLM



[← BACK TO INDEX](#)

SUSTAINABLE MELANGE YARNS

BAMBOO YARN

SALIENT FEATURES

1. Made from inner bamboo stem. Softer than cotton.
2. Anti-microbial and keeps odours away.
3. Most eco-friendly fibre and thermoregulatory.
4. Has skin-healing properties and protects the skin from UV rays.
5. Does not cause skin allergies.
6. Breathable and moisture resistant.

BLEND RATIO

To obtain the properties in the final fabric, 30%-100% of this can be blended with other fibres.

DYEING PROCESS

Can be dyed in any shade through Reactive dyeing process.

WASHCARE

Should be washed with a little amount of softener for a capacious touch and smoother feel.

IRON CARE

Steam well while ironing.

APPLICATIONS

T-shirts, socks, ladies and children wear, underwear, tights etc.



SUSTAINABLE MELANGE YARNS



COUNT: 1/24S • BLEND: COTTON/BAMBOO 30/70 • LOT NO. 1950100035 • SHADE NO. 89968016



COUNT: 1/24S • BLEND: COTTON/POLY/BAMBOO 50/25/25 • LOT NO. 2252306632 • SHADE NO. 89955015



[← BACK TO INDEX](#)

SUSTAINABLE MELANGE YARNS

R-ELAN™ ECOGOLD (CICLO®)

SALIENT FEATURES

1. R-Elan Eco-Gold (CICLO) is constituted to provide breakthrough solutions for the degrading environment.
2. A unique fabric technology that activates Bio-mimetic and biodegradable process.
3. Consciously designed to reduce landfills, and reduce the non-recycled textile's impact on the environment.
4. R-Elan Eco-Gold (CICLO) helps the microbes in the environment to dismantle the materials and turns them into Carbon dioxide, water, minerals etc.
5. The production method is safe for sustainable textiles.
6. Polyester fibres with CICLO technology biodegrade at the same time as natural fibre like Wool.
7. OEKO-TEX ECO PASSPORT certified.

BLEND RATIO

To obtain the properties in the final fabric, 1%-100% of this can be blended with other fibres.

DYEING PROCESS

Can be dyed in any shade through Disperse dyeing process.



SUSTAINABLE MELANGE YARNS



COUNT: 1/30S • BLEND: **ORG COTTON/RELIANCE AIR THERM 60/40** • LOT NO. 2250102495 • SHADE NO. 87500036



COUNT: 1/30S • BLEND: **ORG COTTON//NYLON/POLYLANA 30/20/50** • LOT NO. 2250102524 • SHADE NO. 89945000



[← BACK TO INDEX](#)

SUSTAINABLE MELANGE YARNS

COFFEE CHARCOAL (SCAFE®) YARN

SALIENT FEATURES

1. Coffee is the most consumed beverage. Its residuals discarded are used for making yarns.
2. The remainders are known as Spent Coffee Ground (SCG). 33 million pounds of SCG gets abandoned every day.
3. Consumes body odours all day long.
4. Transfers moisture from the skin to the fabric efficiently. Absorbs sweat and moisture rapidly.

BLEND RATIO

To obtain the properties in the final fabric, minimum 30% of this can be blended with other fibres.

DYEING PROCESS

Can be dyed in any shade through Disperse dyeing process.

WASHCARE

The finish is ever lasting. It must be washed with minimum amount of chemical softener for optimum volume and smoother feel.

IRON CARE

Steam generously during ironing.

APPLICATIONS

Sportswear, outdoor recreation, home, casual, underwear, bed ware and accessories.



SUSTAINABLE MELANGE YARNS



COUNT: 1/30S • BLEND: **COFFEE CHARCOL/COTTON/SEACELL 30/50/20** • LOT NO. 2250102042 • SHADE NO. 89966000



COUNT: 1/30S • BLEND: **REGENERATIVE COTTON/COFFEE CHARCOL 50/50** • LOT NO. 2250102352 • SHADE NO. 80700000



[← BACK TO INDEX](#)

SUSTAINABLE MELANGE YARNS



SORONA SUSTANS® YARN

SALIENT FEATURES

1. A bio-component stretch yarn made from renewable resources.
2. Plant-based polymer, which reduces reliance on fossil based materials.
3. Soft like nylon, bulky like acrylic, stain resistant like polymer, and flexible too.
4. Produced through a bio-chemical process. 37% of raw material comes from renewable resources.
5. Consumes 30% less petrochemical raw materials, compared to Nylon. Deducts green house gases by 63%.
6. Has high level of flexibility. Retains its softness after annealing process.
7. Clothes made are easy to take care of, and fit well too.
8. Absorbs sweat and water very quickly. Doesn't shrink during washing or ironing.

BLEND RATIO

To obtain the properties in the final fabric, minimum 30%-35% of Sorona is required for woven applications and 20%-25% for knits application.

DYEING PROCESS

Dyeing process is close to ordinary process of Polyester (Disperse), but the dyeing technology of Sorona® Sustans is slightly different from ordinary Polyester's, especially for dyeing process and holding temperature. A detailed dyeing procedure is made available on request.

WASH CARE

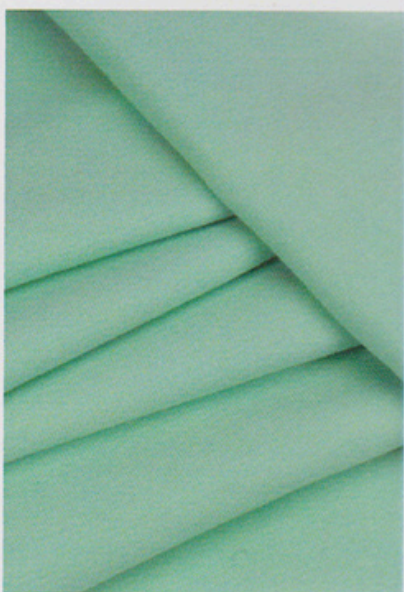
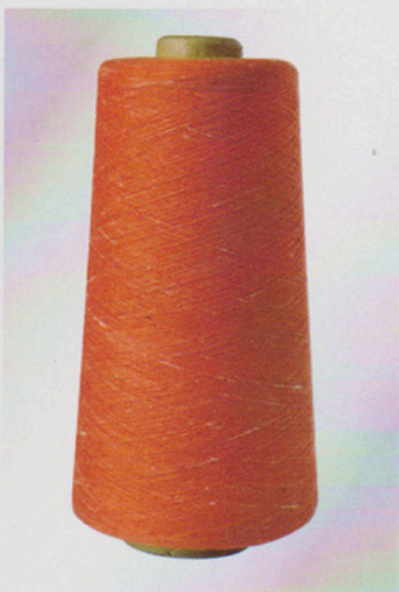
It is suggested to wash it with minimal amount of chemical softener for more voluminous touch, and clearer feel.

IRON CARE

Steam generously during ironing.

APPLICATIONS

Casual/outdoor wear, jeans, active/sports wear, golf wear, gym wear, women's and men's formal wear, knitwear etc.



SUSTAINABLE MELANGE YARNS



COUNT: 1/30S • BLEND: COTTON/SORONA 60/40 • LOT NO. 2250102612 • SHADE NO. 89977000



COUNT: 1/30S • BLEND: COTTON/POLY/SORONA 50/25/25 • LOT NO. 2250102623 • SHADE NO. 85500000



◀ BACK TO INDEX

SUSTAINABLE MELANGE YARNS



COOLMAX® ECOMADE™ YARN

SALIENT FEATURES

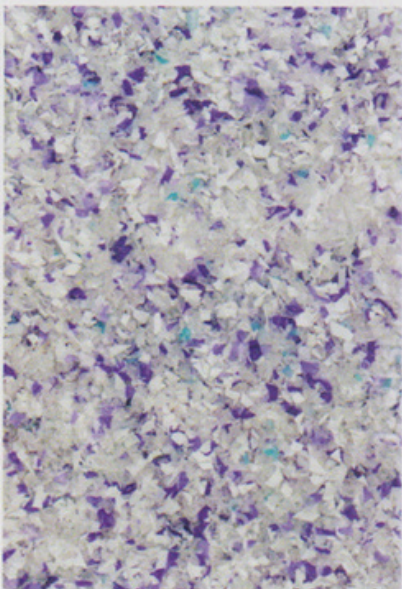
1. Recycled materials are used.
2. Produced with 97% textile wastes or with rPET, the first INVISTA product innovation.
3. Absorbs moisture, and sweat rapidly. Provides comfort to the wearer in any situation.
4. Thermoregulatory and also reduces CO₂ emissions by 25%.

DYEING PROCESS

Disperse dye is applicable for dyeing of Coolmax. A detailed dyeing procedure is made available on request.

APPLICATIONS

Active wear, bedding, denim, outerwear, ready-to-wear, seamless, socks, underwear, workwear etc.



SUSTAINABLE MELANGE YARNS



COUNT: 1/30S • BLEND: COTTON/COOLMAX 60/40 • LOT NO. 2250102613 • SHADE NO. 86960000



COUNT: 1/26S • BLEND: COTTON/VISCOSE/COOLMAX 40/30/30 • LOT NO. 2250102616 • SHADE NO. 89947000

CERTIFICATIONS



CORPORATE OFFICE

RSWM LIMITED

Bhilwara Towers, A-12, Sector - 1, NOIDA - 201301 Delhi NCR (India)

T: +91-120-4390300 **F:** +91-120-4277841 **W:** rswm.in

NEW PRODUCT DEVELOPMENT (Melange Yarn)

P. B. No. 13, Mandpam,
Chittor Road, Bhilwara-
311001,
Rajasthan, India

M : +91-98102-26049, 73400-49333

P : +91-1482-249500, 249575

E : melange@lnibhilwara.com

W : www.rswm.in