
LEADER
IN
**DOMESTIC &
INTERNATIONAL**

**TEXTILE INDUSTRY
SINCE 1960**





"To me, the LNJ Bhilwara Group is not a business house,
I see it as an institution that is committed to
seeking excellence."

L. N. JHUNJHUNWALA



PROUD TO BE INDIAN
PRIVILEGED TO BE GLOBAL

LNJ Bhilwara Group

Founded by L.N. Jhunjhunwala in 1960, the LNJ Bhilwara Group has emerged as a diversified conglomerate with holdings in textiles, graphite electrodes, power generation & engineering, information technology, energy storage solutions and skill development services. Today, the group, with a value of over INR 10,200 cr, comprises of 22 manufacturing facilities and 11 marketing offices placed strategically all across India.

The group began as a small textile mill in Bhilwara and has become a leader in the domestic and international textile industry, transforming Bhilwara into one of the most important textile hubs in India. LNJ Bhilwara Group's success is based on the union of traditional values, an inherent sense of self-reliance and adaptability.

Group Companies



About RSWM

RSWM Limited, the flagship company of LNJ Bhilwara Group, is one of the leading manufacturers and exporters of synthetic, blended and novelty yarns, alongside denim and knitted fabrics. Under the leadership of Mr. Riju Jhunjhunwala, Chairman, Managing Director & CEO of RSWM Ltd, the textile company exports a wide range of fabric and yarns to over 70 countries across the globe. Its 13 manufacturing plants with 5.84 lakh spindles, 172 looms, 95 circular and flat knitting machines produce high-quality cotton, melange, synthetic novelty yarns, denim & knitted fabrics. It produces 1,15,500 MT Synthetic yarn, 21,100 MT Cotton yarn, 21,000 MT Melange yarn, 32 MN Meters Denim fabric, 9360 MT Knits fabric, 43,000 MT Green fibre.

Initiatives towards sustainability have helped in saving water 22,30,734 KL/per annum, reducing 8 lac tons per annum of CO₂ emissions and recycling 6.5 MN PET bottles daily.

PURPOSE

We at RSWM Limited, engaged in the production of textiles, commit ourselves to total stake holder's satisfaction by setting high standards of Quality, Environment, Health & Safety practices by:

- Consistently meeting the customer and other product related requirements.
- Continual improvement in our quality, environmental, health & safety management and performance by setting & reviewing objectives and targets.
- Complying with all the applicable legal & other requirements related to our products, environmental aspects and health & safety hazards.
- Preventing defects, pollution, injuries & ill health through the use of modern technology, improved processes' competence and systems.
- Involvement of all concerned.

VISION

Journeying into a bright future

“Our Vision is to forge ahead in the new millennium with an immediate sense of purpose, and to be seen as the undisputed leader, fully equipped to deliver the best, across the diverse spectra of our many business, fuelled by a commitment to invest in plants, machinery, processes and, most importantly, our people – Team Bhilwara; all towards satisfying and fulfilling our customer’s needs in today’s globally competitive environment.”

We aspire to innovate new trends in textile industry through Excellence and seamlessly grow to pose as a Global Leader by positioning our finest and diverse product worldwide. We are committed to achieve growth by promoting integrity & Ethics and Co-prosperity to ensure that our success is mutually beneficial for our costumer, employees and the community.

MISSION

RSWM envisages itself as a trend setter of the textile industry. It is committed to introduce innovative products in the industry which will set new standards.

To continuously grow on a sustainable basis and be a major, innovative, profitable and the most admired textile manufacturer in Asia.

Core Values



Customer Centricity

- Listen actively to customer feedback
- Seek to understand the customer's business and context
- Deliver beyond expectations through proactive solutions



Ownership Mindset

- Take initiative to identify and solve problems
- Follow through on commitments
- Treat company resources, time, and results as your own



Courage

- Express ideas constructively and confidently
- Stand up for fairness and integrity
- Make informed decisions with clarity



Integrity

- Act honestly and consistently by aligning actions with words
- Make decisions guided by ethics, fairness, and respect for truth
- Honour confidentiality and commitments made to others



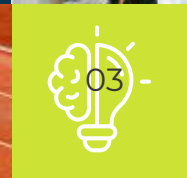
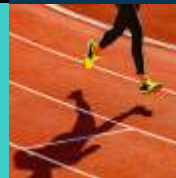
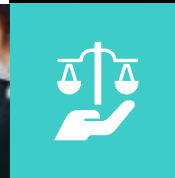
Collaboration

- Encourage and appreciate diverse viewpoints
- Collaborate constructively and support colleagues
- Address conflicts openly and respectfully



Agility

- Be open to feedback and change
- Respond proactively and decisively
- Learn continuously and apply insights





RSWM Limited established

1960



Greige yarn spinning unit established at Banswara

1989



Acquired the Rishabhdev plant from HEG Limited

2003



LNJ Denim established, along with a 46 MW thermal power plant

2007



RSWM FibreGreen launched, a recycled polyester fiber made from PET Bottles

2014

OUR JOURNEY THROUGH

1973

Spinning unit established at Kharigram, Gulabpura



1994

Melange Yarn manufacturing unit established at Mandpam, Bhilwara



2005

Acquired Jaipur Polyspin Ltd., Ringas and Mordī Textiles & Processors Ltd. at Banswara



2011

SJ-11 RSWM's automated spinning plant established, launched RSWM Ultima



2015

Additional capacity at Melange yarn unit at Kanyakheri, Bhilwara





RSWM launched its new range of value added yarns "RSWM EDGE"

2016



17.7 MW Solar Power Plants established at Kharigram & 20 MW Wind Power Plant established at Mordi

2020



Further addition of HJ 21 Melange yarn Kharigram unit launched

2021



"Kapaas" 100% combed compact cotton yarn launched

2023



Acquisition of BG Wind Power Limited (BGWPL)

2024



LNJ GreenPET, food-grade recycled PET resin facility at Ratlam

2026

THE DECADES

2017

Commissioned a 3.3 MW Rooftop Solar Power Plant at Mandpam & Kanyakheri



2021

R-Value, a unique trading division of yarns, fabric and denim is launched

R-VALUE

2022

LNJ Knits established, a new range of knitted fabrics



2024

Chhata unit acquired for knitted fabric and yarn manufacturing



2025

RSWM Partnered with Adani Energy Solutions for 60MW renewable energy



Chairman Message



The global textile value chain is undergoing a structural transformation. A marked shift in buyer and tailor preferences toward integrated sourcing models is accelerating industry consolidation, favouring enterprises that combine scale, efficiency, and end-to-end capabilities. In this evolving landscape, the Indian textile industry is strategically positioned for sustained and responsible growth, supported by its manufacturing depth, skilled workforce, and growing emphasis on innovation and sustainability.

At RSWM Limited, the flagship company of the LNJ Bhilwara Group, we are committed to leveraging this inflection point with clarity of purpose and operational discipline. As one of India's leading manufacturers and exporters of high-quality cotton, melange, synthetic, blended and novelty yarns, alongside denim and knitted fabrics, enabling us to serve global customers with reliability and agility.

Our integrated manufacturing footprint spans 12 state-of-the-art plants equipped with over 5.84 lakh spindles, 172 looms, and 95 circular and flat knitting machines, continue to strengthen our position as a fully integrated textile solutions provider. Guided by a long-term vision and an unwavering commitment to excellence, RSWM remains focused on creating enduring value for customers, partners, employees, and stakeholders alike.

Riju Jhunjunwala
Chairman, Managing Director & CEO

JMD Message

The scale of opportunity before us demands far more than incremental change—it calls for conviction, velocity, and vision. At RSWM, we recognise that legacy approaches, while foundational, are insufficient to unlock the full potential of a rapidly evolving global textile landscape. Sustainable and profitable growth today requires us to challenge established paradigms, re-engineer our processes, and think beyond conventional boundaries. This transformation must be comprehensive rather than selective, immediate rather than gradual, and decisive rather than tentative.



With this clarity of purpose, we embarked on our transformational journey—RSWM 2.0. This is not merely a strategic initiative but a fundamental reset of how we operate, compete, and create value. By reflecting on our past strengths, restoring areas that demand improvement, and reimagining what we already do well, we are building a sharper, more agile, and performance-driven organisation. The blueprint is clear: streamline operations, enhance efficiencies, leverage data and technology, and strengthen customer-centricity across every business vertical.

As we scale new heights of profitability and operational excellence, our ambition is unequivocal—to position RSWM as a globally respected textile major. RSWM 2.0 is about building enduring, measurable, and transformative momentum. It is a collective commitment from our leadership and teams to redefine benchmarks, accelerate growth, and shape a future-ready enterprise capable of leading in both scale and substance.

Rajeev Gupta
Joint Managing Director

RSWM YARNS



SYNTHETIC YARNS

A legacy of high performance synthetic yarns built on quality, customer centricity and scalable excellence.

For over six decades, the Synthetic Yarn Division has served as both a foundational pillar and a forward-driving force in RSWM Ltd.'s journey. As one of India's pioneering producers of synthetic yarn, this division has shaped the company's identity through relentless innovation, technical excellence and an unwavering commitment to quality. Evolving in step with global textile trends, the division continues to deliver advanced yarn solutions for fashion, performance and industrial applications.

Today, it contributes more than 45% of RSWM's revenue, positioning itself as a strategic growth engine and an integral part of the company's long-term vision. Its sustained leadership in domestic and international markets underscores a legacy built on agility, customer-centricity and scalable excellence.



04
synthetic yarn
production
facilities in Rajasthan

3,21,832
spindles & rotors
3440

1,15,500 MT
synthetic yarn
production/year



The company's unit in Bhilwara underwent a major expansion in 2011, building SJ-11, India's most sophisticated automation plant. It resulted in the addition of 51,840 spindles to facilitate production. The yarn from this factory is sold under the brand name ULTIMA® and is the finest polyester-viscose greige yarn in the Indian market.

COTTON YARNS

High-quality premium cotton yarns manufactured for future-ready textiles.

RSWM's cotton manufacturing facilities excel in crafting innovative blends that set new industry benchmarks. With a strong clientele across leading domestic and global brands, we deliver quality trusted worldwide.

Operating a robust fleet of 87,634 spindles across manufacturing state-of-the-art facilities, the company produces 21,100 MT of yarn annually. RSWM's high-quality output fuels the looms of premier weavers across India and international markets, reflecting its commitment to innovation, versatility and customer-centricity.

02
cotton yarn
manufacturing
facilities in Rajasthan

87,634
spindles

21,100 MT
cotton yarn
production/year

kapaas
by RSWM

“Kapaas”, a name that resonates itself through its intrinsic qualities and the symbolism it carries. Just as cotton grows from the soil, it embodies the purity and authenticity of nature's offerings. “Kapaas” captures the essence of simplicity and elegance. It encompasses versatility in its various forms having 54,720 spindles.



MÉLANGE YARNS

Expertise in blending fibres of various colors producing visually striking, rich-textured melange yarns



Mélange yarns blend coloured fibres to create a range of effects in the woven or knit fabric, from subtle to bold. RSWM has nearly three decades of experience creating superior quality mélangé yarns under the brand name "Melantra". Our mélangé yarn production is housed at three factories in Mandpam, Kanyakheri and Kharigram in Bhilwara, Rajasthan.

We produce 21,000 MT of mélangé yarn annually on 96,150 spindles and 1000 rotors. Our yarn-dyeing machines can produce 4,000 MT annually.

03

melange yarn
manufacturing
facilities in Rajasthan

96,150

spindles & rotors
1000

21,000 MT

annual
production





SUSTAINABLE TEXTILES

SUSTAINABLE YARNS

We believe in supporting a universal standard for sourcing organic cotton fibres and follow the processes set by the Global Organic Textile Standard (GOTS), the Better Cotton Initiative (BCI) and the Fairtrade Foundation. Our organic cotton is sourced from verified domestic and international suppliers. We focus a majority of our purchasing on long-staple fibres so we can spin the best-quality yarns for our customers, while also ensuring that our processes stay true to the cause of sustainability.

We also believe in exercising exceptional diligence in sourcing our raw materials to ensure sustainability in our products like recycled polyester, organic cotton, bio based fibres, lyocell, silk, linen, wool, cupro, recycled cotton, biodegradable polyester and materials like hemp, jute, Circulose®, NUCYCL® and SeaCell®.



To reduce our carbon footprint, RSWM's facility in Ringas near Jaipur transforms waste PET bottles into FibreGreen®, our certified recycled polyester fibre.

FibreGreen® is made by processing waste material into fibre. In this process, the loss of useful resources is minimized. Disposed PET bottles are converted into flakes which are finally turned into fibre in different denier and cut for spinning into yarn.

6.5 MN
PET bottles
recycled daily

43,250 MT
PET bottles
recycled annually

43,000 MT
annual
production





Precision, Innovation and Quality woven into denim fabrics

Established in 2007, RSWM's denim division has grown into a recognised industry leader known for superior quality and a perfect blend of style, comfort, and durability. With innovation at its core, the division caters to a wide client base—from fashion designers to everyday apparel manufacturers.

Committed to sustainability and ethical practices, LNJ Denim maintains high production standards and operational efficiency while aligning closely with environmental and social responsibility goals.

It produces high-performance denim and ecru fabric, shirtings and continues to expand its presence in emerging markets. By evolving with industry trends and consumer needs, RSWM's denim segment reinforces its strong domestic and global footprint, ensuring long-term growth and success.

32 MN
meters of
annual denim
manufacturing
capability

3K+
denim fabric
variants

172
looms





Where quality
meets **innovation**



Proactive approach to changing consumer demands

Once recognized primarily for its textile strength, RSWM has strategically diversified through forward integration of its knitting division in 2022, positioning it as a cornerstone of future growth. With deep expertise in yarn curation, advanced knitting methodologies and refined garment engineering, this vertical transforms premium yarns into high-performance knitted fabrics.

Engineered for today's discerning consumer, RSWM's fabrics combine ease, breathability and durability with specialty attributes such as wrinkle resistance and lightweight comfort. The Company offers a diverse product range, including Single Jersey, Interlock, Rib, Fleece, Flat Back Rib, Terry, Foma, Honey Comb, Pique and Waffle, catering to various applications in apparel and textiles. Its agility in responding to consumer preferences and fashion cycles enhances its competitive positioning.

With cutting-edge knitting infrastructure in Mordi (Banswara) and Chhata (Mathura), RSWM delivers precision-engineered textiles with sustainability in mind. Every piece reflects the Company's commitment to operational excellence and elevated quality, upheld by a team of skilled artisans and technologists.

02

knitted fabric
production facilities

95

circular and flat
knitting machines

9360 MT

production
capacity

Blends offered

Cotton • Polyester • High Performance • Spandex • Nylon • Many More



R-VALUE



Launched in 2021, the R-Value LBT division focuses on delivering exceptional value through a diverse product portfolio. We cater to global markets across America, Asia, Europe, and the Middle East & Africa, partnering with mills to supply high-quality products.

As a trusted supplier of fibers, yarns, and fabrics, our strength lies in our dedicated technical team, working closely with customers to provide tailored solutions. We proudly export to over 20 countries worldwide.

YARN

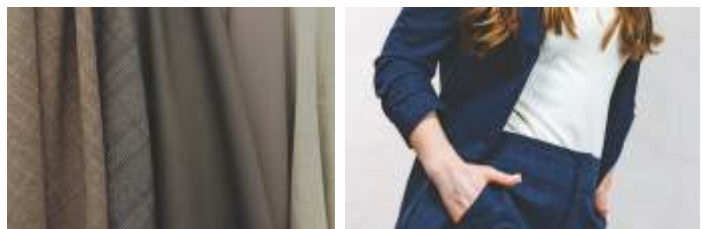
- Cotton Compact Yarn for Knitting and weaving (Organic, BCI)
- 20's and above SPANDEX
- 20D to 140D for textile applications & 280D to 1680D for narrow woven applications
- Black spandex
- Diaper grade spandex DTY & FDY In Polyester/Nylon Vortex yarn
- Nylon 6 yarn
- Acrylic yarn

FABRIC

- Woven – Poplin , Twills (Greige and Finished product - Shirting and bottom weights)
- Denim fabric (Wider width)
- PV suiting fabric
- Home textiles (Towels, bedsheets, Quilts, pillowcovers, etc.)
- Linen fabric

FIBRE

- PSF/RPSF for non-woven application (Polyester Staple Fibre – Virgin & Recycled)
- VSF (Viscose staple fibre)
- Comber Noil



SUSTAINABILITY

We only take
what we can give

For over 60 years, RSWM Limited has been at the forefront of sustainable practices, driven not by mandates but by a deep passion to give back to nature what we take from it. We maintain a reciprocal relationship with nature, taking only what we can give back.

In the 21st century, our sustainability efforts have evolved. From harnessing renewable energy and recycling crores of PET bottles annually to reducing CO₂ emissions and conserving water, our initiatives reflect our unwavering commitment to the environment.





Green Energy

At RSWM, our efforts to reduce reliance on traditional modes of energy have led us to adopt renewable sources like solar and wind for our power needs.

**102 MN KW
Green Energy Used**



Bio Fuel

In order to replace fossil fuel consumption and reduce dependencies on harmful substances, we use dry husks to create biofuel to aid in our manufacturing processes.

**14,714 MT
Bio Fuel Used**



Organic Manure

Established facilities to transform its waste materials into organic manure, a sustainable approach that contributes to environmental stewardship.

**91,611 KG Organic
Manure Used**



Recycled Polyester

Plastic waste has engulfed the world in landfills and garbage patches on our oceans. To reverse this ecological crisis, we find ways to upcycle polyester in our products.

**38,270 MT
Recycled Polyester Used**



Organic Cotton

Integrating organic cotton into our product offerings, we actively support the growing demand for eco-conscious materials and contribute to a more resilient, sustainable future.

**11,674 MT
Organic Cotton Used**



PET Bottle Recycling

Fibre Green is made by processing waste material into fibre. Disposed PET bottles are converted into flakes which are finally turned into fibre in different denier and cut for spinning into yarn.

**6.5 MN PET Bottles
Consumed Daily**



CO₂ Emissions

In renewable energy sources, we have two hydro and wind-power projects along with a roof top solar power plant, aggregating a total of more than 360 MWs.

**8,00,000 Tonnes of
CO₂ emissions reduced**



Water Care

Our facilities combat water consumption concerns in the textile industry by using advanced multi-stage treatment plants to recycle water through zero liquid discharge (ZLD) policy in place.

**22,30,734 KL
Recycled Water Used**

*All figures are from FY 24-25

Award & Recognition

Employers Association of Rajasthan



Received the Best Employer 2025 Award

The 55th National safety Day



Received the Rajasthan State Safety Award 2025

CITI



CITI First Runner-Up Award for Innovative Water Management & Conservation Sustainability 2024-25

IRIM AWARD



Silver Trophy for Green Manufacturing Practices by International Research Institute for Manufacturing (IRIM) 2025

TIMES BUSINESS ICON



Times Business Icon 2026 – Inspiring Business Leader of the Year award

FE GREEN SARTHI



Silver Award in Sustainable Fashion and Textiles- Financial Express (India) Green Sarathi Awards 2025

NATIONAL LEADERSHIP SUMMIT



TimesAsprie National Leadership Summit & Awards 2026

APPAREL RESOURCES



AR Choice Award for Sustainable Textile Manufacturer of the Year at the Sustainable NXT Awards 2025

MATEXIL



MATEXIL Technical Textiles Export Awards, HOMETECH (Bronze) for both 2023–24 and 2024–25

MOST PREFERRED WORKPLACE



Recognised with the Most Preferred Workplace 2025–26 title in the Manufacturing Sector

CERTIFICATIONS



OUR CLIENTS

TOMMY HILFINGER



GUESS
BY MARCIANO



NEXT



M&S

Marc O'Polo



PRIMARK

JACK&JONES

DECATHLON

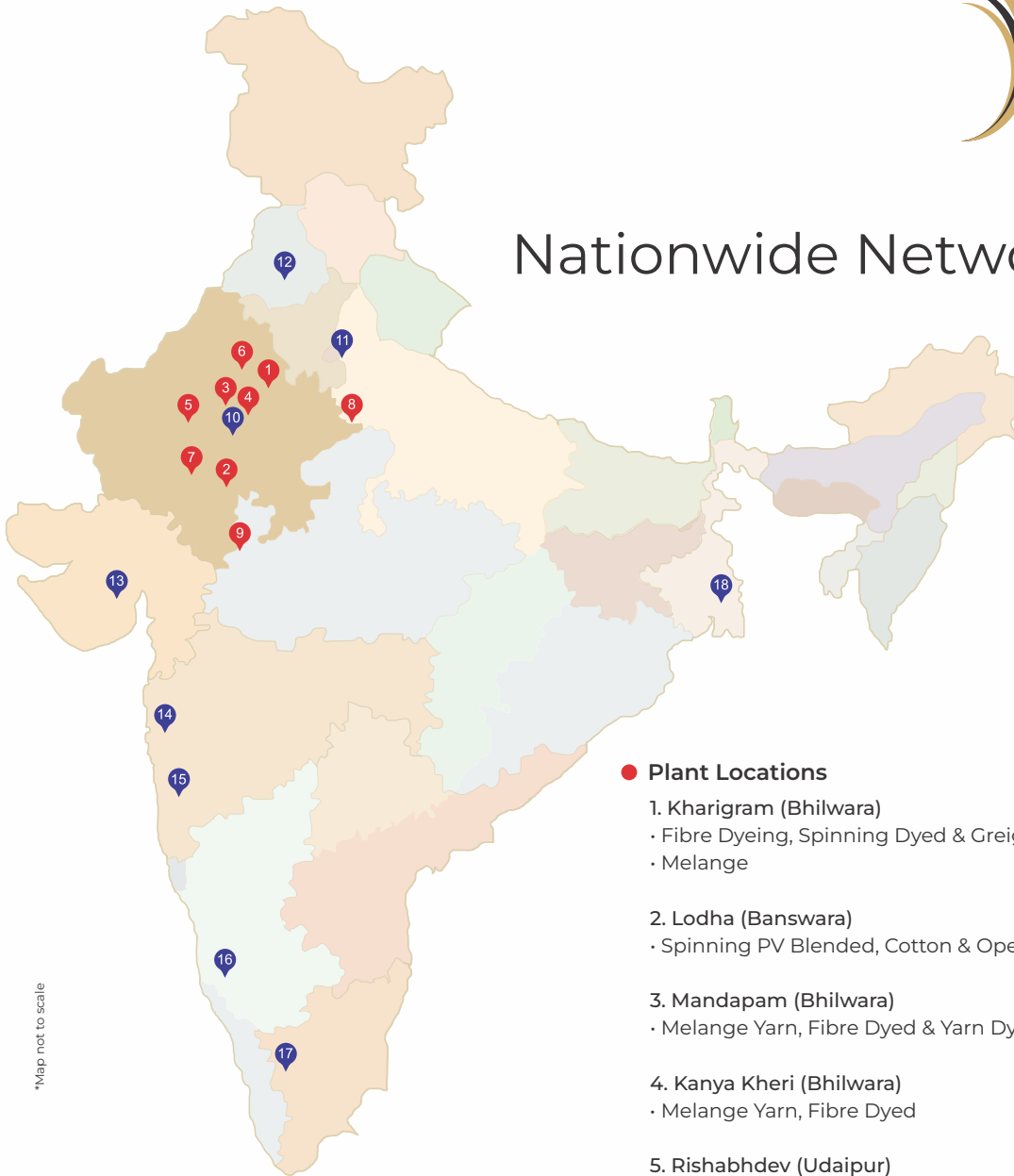
PULL&BEAR



Calvin Klein

VICTORIA'S SECRET

Nationwide Network



*Map not to scale

● Plant Locations

1. Kharigram (Bhilwara)
 - Fibre Dyeing, Spinning Dyed & Greige Yarn
 - Melange
2. Lodha (Banswara)
 - Spinning PV Blended, Cotton & Open End Greige Yarn
3. Mandapam (Bhilwara)
 - Melange Yarn, Fibre Dyed & Yarn Dyed
4. Kanya Kheri (Bhilwara)
 - Melange Yarn, Fibre Dyed
5. Rishabhdev (Udaipur)
 - Spinning PV Blended Greige Yarn
6. Ringas (Sikar)
 - Fibre Dyeing & Spinning Dyed Yarn, Green Polyester Fibre
7. Mordi (Banswara)
 - Cotton Ring & Open End Spinning
 - Dyeing, Processing & Finishing Denim Fabric
 - Knitting, Processing & Finishing
8. Chhata, (Mathura)
 - Knitting & Processing
9. Ratlam (MP)
 - Bottle to Bottle Processing

● Marketing Offices

- | | | |
|--------------|------------------|---------------|
| 10. Bhilwara | 13. Ahmedabad | 16. Bengaluru |
| 11. Noida | 14. Mumbai | 17. Tirupur |
| 12. Ludhiana | 15. Ichalkaranji | 18. Kolkata |



CORPORATE OFFICE

A-12, Bhilwara Towers, Sector-1, Noida 201301, NCR Delhi, India
☎ +91-120-4390300 🌐 info.rswm@Injbhilwara.com ✉ rswm.in



Visit our website

